



Graphic: Phytoplankton ID Guide

Phytoplankton

Dinoflagellates



*Noctiluca**



*Akashiwo**



*Alexandrium**



*Lingulodinium**



*Dinophysis**



Prorocentrum



Ceratium

Diatoms



*Pseudo-nitzschia**



Coscinodiscus



Chaetoceros



Asterionellopsis



Laderia

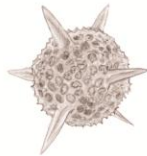


Pleurosigma

Acantharians/Radiolarians



Acanthometra



Radiolarian

Ciliates



Tintinnid

* HABs (harmful algal blooms)