



**Cabrillo
Marine
Aquarium**

SKETCH A PELICAN - HOW TO GUIDE -



Created for Cabrillo Marine Aquarium
by Catherine Terrones, Aquarium Educator

3720 STEPHEN M. WHITE DRIVE • SAN PEDRO, CALIFORNIA 90731
PHONE 310-548-7562 • FAX 310-548-2648 • www.cabrillomarineaquarium.org
A FACILITY OF THE CITY OF LOS ANGELES DEPARTMENT OF RECREATION AND PARKS
WITH SUPPORT FROM FRIENDS OF CABRILLO MARINE AQUARIUM



How to Sketch a Pelican



Have you ever tried to Draw a Pelican? Lets try it!

Take a look at this resource:

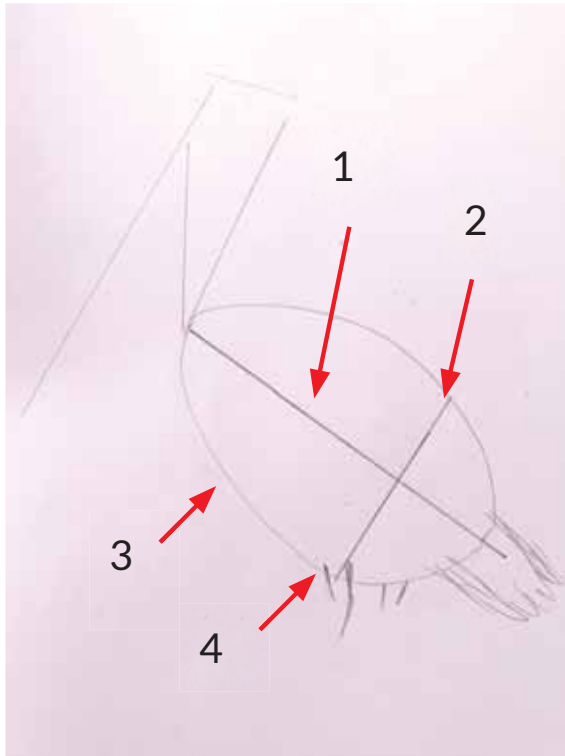
[How to Draw Birds - John Muir Laws](#)

Use the resources on CMA Bird Page or online photo albums like [National Geographic's Brown Pelican Feature](#) to find a photo to base your drawing from.

Then follow the prompts in this Journal that show you how!



Foundation Lines

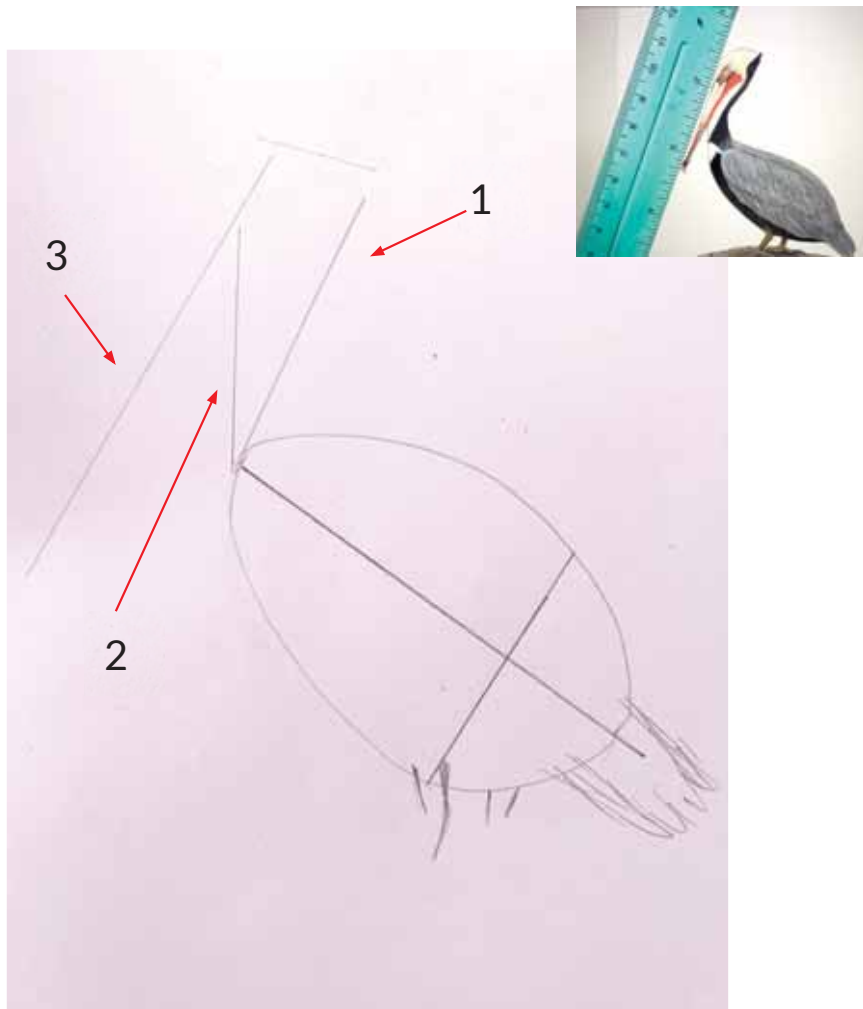


Create Foundation Lines - Body

- Choose a photo to work from
- First notice what angle is the body at?

Draw a line to represent the angle :

- 1.) You can measure the length of that line from neck to tail / or end of body.
- 2.) Measure the width of the body at the thickest point or multiple points
- 3.) Draw a circle/oval around your angle line to represent the body
- 4.) Place the legs in relationship to the body



Foundation Lines

Foundation Lines - Head.

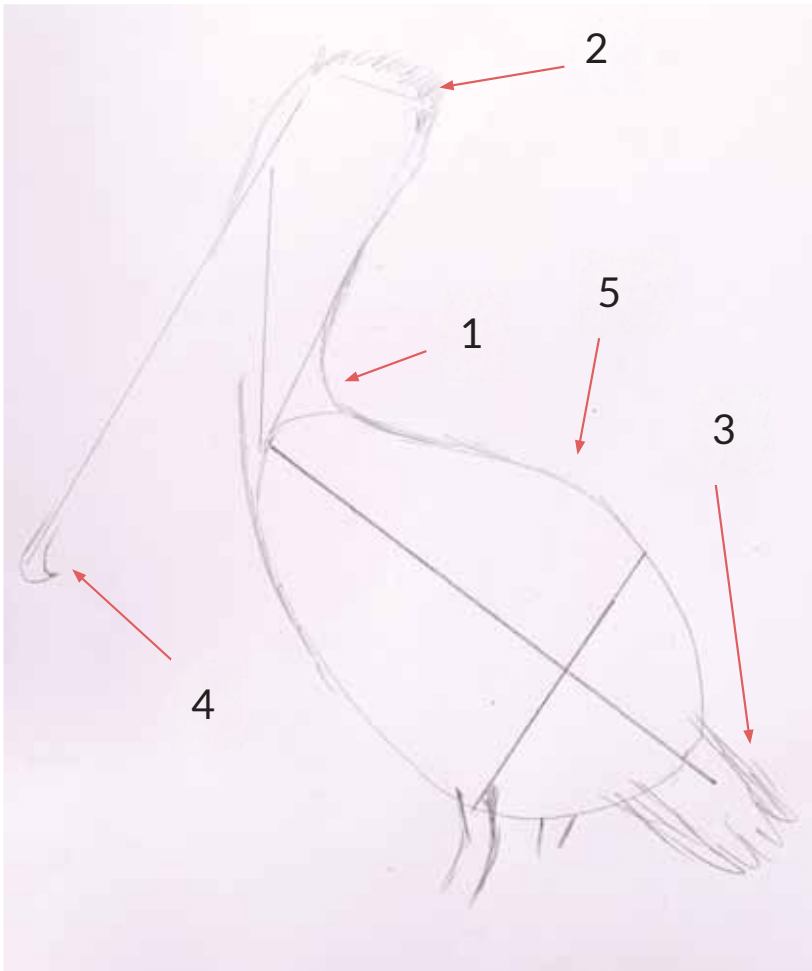
- Position lines for the head, feet , and tail around the circle

Here we measured

- 1.) Center bottom neck to top /back crown of head
- 2.) Center body line/neck to front of eye.
- 3.) Tip of beak to front/ top crown of head

This gives you a frame for the length of neck size of head , and where it sits on the body

Contour the Angles



Contour + Shape the Angles

- Connect the parts of the body with softer lines and arches.
- Correct proportions or shapes
- Check your source photo often
- Here's where we rounded the angles or adjusted the shape on this pelican:

- 1.) Neck line, front and back
 - 2.) Rounding the Head shape
 - 3.) Adjusting the Tail angle
 - 4.) Adding the tip of the Beak
 - 5.) Adjusted the Body shape slightly
-

Add Details



Add More Detail

- Fill in more lines
- Erase foundation lines once you know you don't need them
- Adjust shapes or proportions as needed
- Then start to add additional details like :

- 1.) Feet - consider size, placement, direction
- 2.) Full beak
- 3.) Eye - and shapes around the eye
- 4.) Feather sections
- 5.) Shading

Finish with Line Details and Color



Keep Learning through Bird Journaling!

You might choose another bird from CMA's Bird Resource Page and attempt to draw it.

Have you ever tried to draw a Blue Heron? Or a Snowy Egret? Is there another bird you find interesting or think could be challenging? Try this technique with a new bird!

Share your drawings on social media and tag or mention Cabrillo Marine Aquarium in your post! We'd love to see your journals!

