



# Phytoplankton ID Guide

## Phytoplankton

### Dinoflagellates



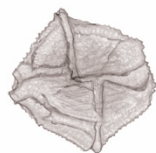
*Noctiluca\**



*Akashiwo\**



*Alexandrium\**



*Lingulodinium\**



*Dinophysis\**



*Prorocentrum*



*Ceratium*

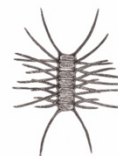
### Diatoms



*Pseudo-nitzschia\**



*Coscinodiscus*



*Chaetoceros*



*Asterionellopsis*

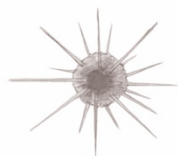


*Laderia*

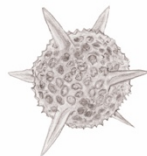


*Pleurosigma*

### Acantharians/Radiolarians



*Acanthometra*



*Radiolarian*

### Ciliates



*Tintinnid*

\* HABs (harmful algal blooms)